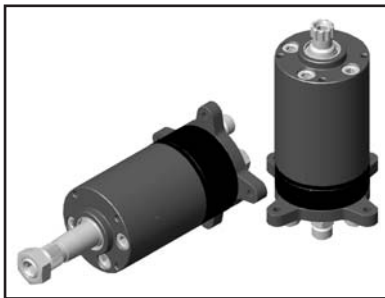


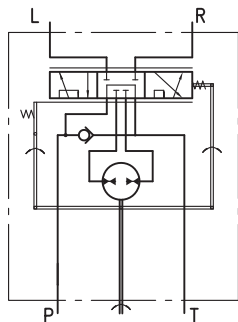
# HYDROSTATIC STEERING UNITS TYPE HKUM.../4(PB)



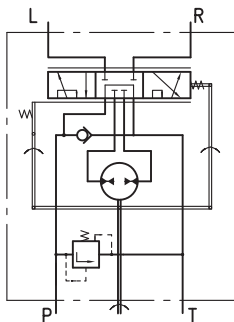
M+S Hydraulic expands its range of hydrostatic steering units with mini steering units, which are used in lawn and garden machines, minitractors and municipal vehicles.

HKUM.../4 is open centre steering units in neutral position have open connection between pump and tank.

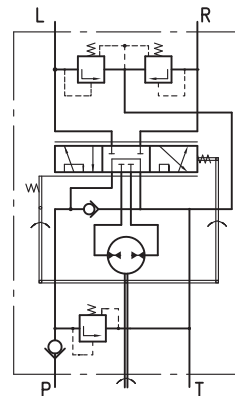
HKUM.../4PB works as standard steering unit with auxiliary port designed for flow providing additional vehicles functions. When the steering wheel is not turned, the flow will be delivered to port PB. After the steering wheel has been turned a part of the flow will be deviated to the steering unit and the flow through port PB will be inconstant.



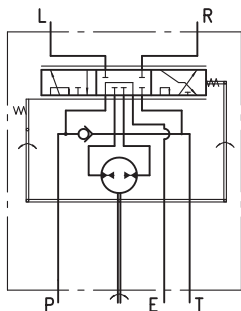
"Open Center - Non Load Reaction"  
HKUM.../4



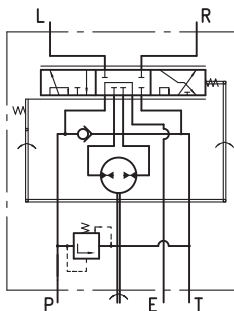
"Open Center - Non Load Reaction"  
HKUMR.../4



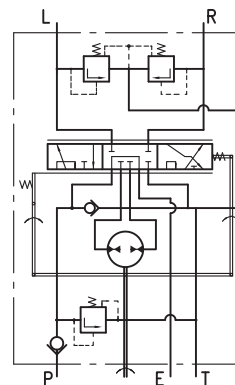
"Open Center - Non Load Reaction"  
HKUMS.../4



"Open Center - Non Load Reaction"  
HKUM.../4PB - Power Beyond



"Open Center - Non Load Reaction"  
HKUMR.../4PB - Power Beyond



"Open Center - Non Load Reaction"  
HKUMS.../4PB - Power Beyond

## SPECIFICATION DATA

Parameters		Type						
		HKUM... 32/4(PB)	HKUM... 40/4(PB)	HKUM... 50/4(PB)	HKUM... 63/4(PB)	HKUM... 70/4(PB)	HKUM... 80/4(PB)	HKUM... 100/4(PB)
Displacement	cm <sup>3</sup> /rev [in <sup>3</sup> /rev]	31,8 [1.94]	40 [2.44]	50 [3.05]	63 [3.84]	70 [4.27]	80 [4.88]	100 [6.10]
Rated Flow*	lpm [GPM]	3,2 [.85]	4,0 [1.06]	5,0 [1.32]	6,0 [1.59]	7,0 [1.85]	8,0 [2.11]	10,0 [2.64]
Max. recomendated oil frow	lpm [GPM]	20 [5.3]						
Rated Pressure	bar [PSI]	125 [1810]						
Relief Valve Pressure Settings**	bar [PSI]	60 [870]	70 [1015]	80 [1160]	90 [1305]	100 [1450]	110 [1595]	125 [1810]
Shock Valves Pressure Settings***	bar [PSI]	120 [1740]	130 [1885]	140 [2030]	150 [2175]	160 [2320]	170 [2465]	185 [2683]
Max. Cont. Pressure in Line T	bar [PSI]	20 [290]						
Max. Torque at Servoamplifying	Nm [lb-in]	2,0 [17.7]						
Max. Torque w/o Servoamplifying	Nm [lb-in]	80 [708]						
Weight, kg [lb]	for HKUM.../4...	2,3 [5.1]	2,4 [5.3]	2,5 [5.5]	2,6 [5.7]	2,65 [5.84]	2,7 [5.95]	2,9 [6.39]
	for HKUM.../4(PB)...	2,6 [5.7]	2,7 [5.9]	2,8 [6.2]	2,9 [6.4]	2,95 [6.5]	3,0 [6.6]	3,2 [7.1]

\* Rated Flow at 100 RPM.

\*\* Pressure Settings are at flow rate of 12 l/min [3.17 GPM] and viscosity 21 mm<sup>2</sup>/s [105 SUS] at 50°C [120°F].

\*\*\* Pressure Settings are at flow rate of 1 l/min [.26 GPM] and viscosity 21 mm<sup>2</sup>/s [105 SUS] at 50°C [120°F].